

**2025 Annual
Impact Report**
Rooted in Resilience

2025 By the numbers



TreePeople

6,624

volunteers



28,400

students educated



352

teachers engaged

656

volunteer events

303

schools reached



416

in-classroom projects



324

tours



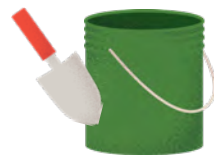
22

youth internships provided



1,007

urban trees planted



19,855

trees cared for



6,015

trees distributed

23

greening plans developed



19,688

native plants and trees planted

871

acres of forestland managed

3,000

acres of coastal mountains protected



6

schools greened



65,710

square feet of new green space



200+

fire-impacted residents reached to conduct soil testing

42,511

square feet of lawns transformed to native habitat



Dear TreePeople Family,

As we reflect on 2025, we do so with a deep sense of pride in what TreePeople has accomplished and gratitude for the community that makes this work possible.

This past year was one of both challenge and meaningful progress. Across Southern California, communities faced wildfires, extreme heat, and increasing environmental pressures. In the midst of these conditions, TreePeople continued to show what it means to lead with purpose—delivering impact, strengthening partnerships, and remaining a steady presence for the communities we serve.

For more than 50 years, TreePeople has been guided by a simple but powerful understanding: caring for the environment and caring for people are inseparable. In 2025, that principle was put into action every day. From restoring fire-impacted landscapes and expanding urban tree canopy, to engaging tens of thousands of students and advancing innovative green infrastructure, this work is improving lives while building long-term resilience.

For Cassie, stepping into the role of Chief Executive Officer during this time offered a unique perspective—joining an organization that had already demonstrated extraordinary resilience and commitment. What stands out most is the strength of this community: a team that leads with integrity and care, and a network of partners, volunteers, and supporters who show up consistently to make this work possible.

From the Board's perspective, we see an organization that continues to evolve while staying deeply rooted in its mission. TreePeople is not only planting trees—it is helping shape how our region responds to climate challenges, demonstrating how nature-based solutions can create healthier, more resilient communities.

This Impact Report reflects both the scale of that work and the collective effort behind it. The progress captured here is the result of many hands and shared commitment—from staff and volunteers to donors, partners, and community members.

As we look ahead, the need for this work will only grow. We move forward with confidence—grounded in decades of experience, guided by expertise, and strengthened by the community that surrounds TreePeople.

Thank you for being part of this work and for helping build a more resilient, thriving Southern California.



With gratitude,

Cassie Rauser, PhD
Chief Executive Officer

John D. Bunzel
Chair, Board of Directors

Wildfire Resilience Fund

In response to the January 2025 Palisades and Altadena wildfires, TreePeople launched the Wildfire Resilience Fund to strengthen long-term preparedness, accelerate recovery, and expand fire-adapted land stewardship.

This work builds on decades of leadership in wildfire mitigation, land stewardship, and ecological restoration, applying proven and community-driven strategies to reduce risk and help ecosystems recover after fire and other disturbances.

In this past year since the January wildfires, we've already accomplished:

- Soil sampling from neighborhoods affected by 2025 wildfires in partnership with UCLA to assess post-fire soil health, identify contaminants, and inform safe restoration strategies.
- Free site walks and tree canopy assessments for residents affected by fires, offering personalized guidance to support recovery.
- Planting efforts at Loma Alta Park in Altadena—stabilizing soils, greening shared spaces, and building community connection as the area recovers from wildfire impacts.

The Wildfire Resilience Fund allows the organization to build on this strong foundation, and TreePeople is uniquely positioned to provide comprehensive, sustainable recovery plans and care. To help accelerate this critical work, TreePeople is currently able to match every dollar raised so that your donation will have double the impact! To make a difference today, visit treepeople.org/wildfire to donate or learn more.

January 2025 Wildfires

In January 2025, one of our active work sites behind the town of Castaic was impacted by the wildfires in LA County. This project site focused on planting of over 2000 oak seedlings from 2021-2024 in response to the 2002 Copper Fire. All of the seedlings planted received monthly watering in subsequent dry seasons since being planted and then burned in the Hughes Fire. The land within these specific plots of the burn footprint experienced moderate severity fire and the restoration teams conducted several surveys afterwards to monitor regrowth. TreePeople is elated to report that in a powerful

sign of resilience, more than 1200 seedlings have already resprouted—many now growing taller than they were before the fire. Within 2025, TreePeople launched our Wildfire Resilience Fund, raising **over \$1 million** to date, building our teams' ability to act quickly post fire and expand our response beyond existing grants.

Oak Restoration at Tuna Canyon Park

In response to the wildfire damage sustained during the **Palisades Fire**, TreePeople Land Trust (TPLT) began a large-scale restoration effort at Tuna Canyon Park, a popular hiking destination located between Malibu and Topanga in the Santa Monica Mountains. This year, TPLT planted over 250 coast live oak (*Quercus agrifolia*) saplings, with an additional 200 to be planted next year. These plantings will augment the existing population of coast live oaks already present within the park, helping re-establish oak presence in areas dominated by invasive weeds. As the keystone species of the Santa Monica Mountains, these oaks will enhance biodiversity and benefit the local ecosystem. Alongside planting, TPLT has conducted extensive brush clearance and invasive species removal to counter the explosion of postfire invasive weed growth. A long-term monitoring and maintenance schedule was put in place to ensure the success of restoration efforts within the park.



TPLT staff planting coast live oak saplings

Conservation

TreePeople's Conservation team restores fire-impacted and degraded ecosystems across Southern California's mountain ranges through reforestation and habitat enhancement projects. By protecting biodiversity, strengthening watershed health, and rebuilding climate-resilient landscapes, our Conservation team is helping nature to recover and communities to thrive.



19,688
native plants and
trees planted

871
acres of forestland
managed

Scaling Restoration Impact

Throughout 2025, TreePeople's conservation team expanded our capacity to deliver large-scale restoration to bolster our ability to do large plant-outs in project sites often too challenging to include volunteers. Regularly, the team of 20 field staff is split up across over 6 respective projects which run simultaneously. Within the last year, the team united over the course of 20 days to plant 5000+ seedlings across 3 projects. This is in addition to our weekly volunteer events and contractor work bringing us to a total of over 16,000 plants installed through the course of the 2 planting seasons in 2025.



Coldwater Canyon restoration



Castaic Lake planting

TreePeople launched the newest facet of our conservation team, the restoration tech crew made up of four individuals. This highly experienced team is designed to increase capacity for invasive species control, brush clearance and planting output. In addition to supporting active projects the tech crew is responsible for several of their own specific invasive species management projects throughout the Angeles National Forest.

TreePeople Land Trust

TreePeople Land Trust stewards over 3,000 acres across the Santa Monica Mountains, protecting these lands for future generations. Through public recreation, environmental education, and scientific research, the team ensures these open spaces continue to inspire, educate, and sustain the communities and ecosystems that depend on them.



3,000
acres of coastal
mountains protected

Protecting Land While Building Fire Resilience

This year underscored the critical role of TreePeople Land Trust (TPLT) in safeguarding Southern California’s natural landscapes against escalating wildfire threats. The January wildfires served as a stark reminder that climate-driven disasters are no longer seasonal, but rather constant. Southern California’s landscapes (and the people that live alongside them) are facing a new era of risk.

This year, TPLT focused on advancing wildfire resilience through science-based education and policy engagement. A key area of attention has been on “Zone 0,” or the first five feet surrounding a home, now recognized by California as a critical ember-resistant zone. This small but powerful area is the frontline of defense against flying embers, which are the leading cause of home loss during fires. By recently joining a UCLA-led working group, TPLT is pushing for flexibility, better science, and equitable implementation of Zone 0 across diverse urban and natural environments.

Through collaboration, advocacy, and education, TPLT is ensuring that wildfire preparedness evolves alongside the changing climate—protecting land, homes, lives, and ecosystems for generations to come.

Lois Ewen Overlook Improvements

In early 2025, TreePeople Land Trust completed a substantial rehabilitation of the Lois Ewen Overlook, a popular viewpoint and home to the trailhead of Topanga Lookout Trail and the Backbone Trail. Major updates included a larger, more secure trash receptacle with foundation repairs; new interpretive signage

designed to enhance safety and public engagement; and the refurbishment of benches, sign frames, commemorative elements, and other infrastructure. Vegetation clearance was also extended downslope to reduce fire risk. TPLT has expanded our maintenance schedule to better meet the needs of this popular hiking trail. Twice-weekly servicing has already resulted in a marked reduction in graffiti, vandalism, and trash across the site that has long suffered overuse.

Post-Fire Brush Clearance Work in the Santa Monica Mountains

TreePeople Land Trust performs annual brush clearance to mitigate wildfire risk within the preserves TPLT owns and manages for neighbors. After the 2025 fires, TPLT expanded its fuel modification work to include post-fire recovery. While our core Cold Creek preserves remained untouched, several large parcels in Malibu burned in the Palisades Fire, requiring staff to remove debris while suppressing invasive regrowth and continuing with our regular annual brush clearance schedule. TPLT was also able to lend our assistance with fuel modification efforts at Mill Creek Ranch (MRCA) in Old Topanga Canyon.



New Lois Ewen Overlook interpretive signage installation

Community Forestry

TreePeople’s Community Forestry team uses a community-based approach to plant, distribute, and care for trees across South Los Angeles, Southeast Los Angeles, the San Fernando Valley, the San Gabriel Valley, and the Inland Empire. Our goal is to ensure every community in Southern California has equitable access to a thriving urban tree canopy, cooler neighborhoods, cleaner air, and healthy ecosystems.



1,007
urban trees planted



19,855
trees cared for



6,015
trees distributed



Follow Your Heart tree distribution



Huerta del Valle tree planting

A Year of Pressure and Adaptation

In 2025, TreePeople’s Community Forestry team expanded access to trees and shade across Southern California—delivering tangible benefits in communities that need it most, even while navigating compounding challenges.

In Los Angeles, new policy and permitting requirements around root barrier installation threatened to bring many projects to a standstill. While these mandates were designed to protect public infrastructure, they also risked limited tree planting in areas already lacking shade and canopy cover. Through close collaboration with City partners and the Urban Forestry Division, TreePeople secured critical exemptions and developed adaptive approaches that both safeguard infrastructure and ensure the long-term health and stability of the urban forest and the communities that benefit from them.

In the Inland Empire, consecutive heat waves created urgent conditions for newly planted trees and the staff maintaining them. Our team quickly mobilized resources, adjusting watering schedules and implementing new safety protocols to protect both people and tree canopy in our most climatically vulnerable neighborhoods, all while demonstrating our capacity to respond rapidly to an increasingly unstable climate.

Impact on the Ground

Across Southern California, TreePeople's Community Forestry team made tangible, visible changes this year, bringing shade, food security, resilience, and environmental justice to neighborhoods experiencing the highest heat burdens and lowest levels of canopy coverage.

Inland Empire

In Mead Valley, residents lined up as early as 5am for the 9am start, eager to bring long-overdue shade and food security to their homes. In partnership with the County of Riverside and Supervisor Kevin Jeffries, The Grove Church, and the California Conservation Corps, 1,000 fifteen-gallon fruit trees were distributed in a smooth drive-through event. Each community member left with trees selected for their shade capacity, drought tolerance, and suitability to local climate conditions.

South and Southeast Los Angeles

Amid heightened fear and uncertainty tied to increased enforcement activity in the area, staff maintained a consistent presence in the predominantly Latinx neighborhoods. Volunteer and tree distribution events continued, trust deepened, and progress did not stall where shade is needed most in LA County.

San Fernando Valley

In the West Valley, the team distributed over 1,000 shade and fruit trees at community festivals and hands-on events—providing residents not only with trees but with education on planting, watering, and long-term care. While assessing over 400 potential tree planting sites, the team successfully planted 200 new trees with community members, corporate volunteers, and staff. A new street nomination campaign empowered residents to guide where trees are planted, resulting in community-selected greening projects like Jumilla Avenue in Winnetka.



Mead Valley tree distribution

Environmental Education and Outdoor Equity

TreePeople's Environmental Education and Outdoor Equity team engages youth, families, and teachers through service learning that blends hands-on stewardship with classroom curriculum. By expanding access to nature and providing green career exposure, the team inspires the next generation to care for their neighborhoods, urban forest, and wider environment.



28,400
students educated



352
teachers engaged



116th St Elementary School Eco-Tour at Coldwater Canyon Park



303
schools reached



416
in-classroom projects



324
tours



22
youth internships provided

Remaining Resilient for Students and Teachers

In 2025, TreePeople's Environmental Education and Outdoor Equity team demonstrated remarkable adaptability, ensuring students and teachers remained connected to nature despite unprecedented challenges. Chief among these challenges was high student attrition rates. Attrition rates rose sharply over the course of the year, escalating from 10% in January 2024 to 59% in January 2025. This dramatic shift was not isolated. In January 2025, the California Department of Education publicly acknowledged what many schools were already experiencing on the ground: increased fears related to immigration enforcement were keeping students home.

Compounding this issue, the catastrophic January 2025 wildfires brought another layer of disruption. The fires led to the closure of many open space areas due to both fire danger and extremely poor air quality, including TreePeople's Coldwater Canyon Park and the nine additional sites TreePeople takes students. School closures further disrupted planned programming. Scheduling and booking became a challenge throughout January, as many teachers continued to express concerns over air quality even after schools reopened. As a result, programming was delayed until early February, decreasing our availability during a month that is favored for its cool weather.



Summer Institute 2025

In response, TreePeople took immediate action to stabilize and protect student access to Environmental Education and Outdoor Equity. TreePeople launched a multi-tiered engagement strategy focused on strengthening school relationships, building trust through consistent communication, increasing flexibility in programming, expanding trip date opportunities, data monitoring, and responsive planning. These efforts have shown positive results, with a 16% increase in participation rates and strengthened school partnerships as the year progresses.

Environmental Education & Outdoor Equity Highlights

TreePeople's Environmental Education and Outdoor Equity teams fostered meaningful growth this year, strengthening environmental awareness, leadership, and connection among students and families. These efforts helped cultivate resilience in communities by supporting hands-on learning, expanding access to nature, and empowering young people to shape a greener future.

Annual Youth Summit

This year, TreePeople's Environmental Education and Outdoor Equity team brought together student environmental leaders from across Southern California for the Annual Youth Summit, a showcase of campus-based sustainability projects. Two hundred students from five SoCal middle and high schools showcased service-learning projects, selected from 10,000 participating students. The Summit featured a resource fair, interactive workshops, and a Green Career panel, before students presented their campus projects on composting, fast fashion, tree care, and native plant use. Generation Earth provides project toolkits, field trips, and sends TreePeople's environmental educators to schools to help identify and address pressing community needs in waste, water, and advocacy.



Environmental Youth Summit 2025



Cindy Montañez Young Leaders Program interns

Cindy Montañez Young Leaders Program

Through paid internships in the Cindy Montañez Young Leaders Program, youth from the El Monte Union High School District learned natural resources management alongside TreePeople's professional environmentalists. Eleven high school interns spent four weeks in hands-on experiences in mountain conservation, community forestry, wetlands restoration, and beach clean-ups along the San Gabriel Watershed. Building on their field experience, interns identified a specific ecosystem or community need and designed a Community Action Project, applying their new skills to create real environmental impact in their communities.

Natural Connections Trips

TreePeople's Natural Connections program deepened family engagement with nature through multigenerational Aire Libre trips. Families from San Fernando and Huntington Park, communities with limited access to parks, received transportation to TreePeople's Coldwater Canyon Park for guided Moonlight Hikes or weekend Eco-Tours with meals included. With more than 50 Aire Libre trips planned this year and next, families are gaining shared opportunities to explore natural systems, strengthen environmental awareness, and build lasting connections to the outdoors.

Green Infrastructure

TreePeople's Green Infrastructure team transforms schools, streets, and other public spaces into greener, healthier places that deliver real benefits for people and nature. By bringing together landscape design, urban forestry, watershed management, and community engagement, the team turns complex projects into visible, lasting improvements that strengthen neighborhoods, and build climate resilience.



6
schools greened

65,710
square feet of
new green space



23
greening plans
developed



Sparks Middle School tree planting



Lindbergh Elementary School asphalt removal

Transforming Spaces for Resilience

In 2025, TreePeople's Green Infrastructure team delivered meaningful, community-centered projects across Southern California—advancing greener schoolyards and public spaces even within complex and evolving systems.

Working alongside partners such as LAUSD, Recreation & Parks, and utility providers, the team successfully moved projects forward while navigating shifting regulations, technical constraints, and multi-agency coordination. These are not simple environments—but they are exactly where this work matters most.

Public spaces are living systems, and every project requires balancing community priorities, infrastructure realities, and long-term environmental performance. TreePeople meets this complexity with both rigor and care—ensuring each project is not only feasible, but deeply responsive to the people who will use and benefit from it.

This year, the team also helped strengthen the systems that shape this work—improving district processes, informing policy, and unlocking pathways for future projects. As a result, TreePeople is not only delivering individual sites, but helping make it easier to deliver many more.

Through this work, the Green Infrastructure team continues to demonstrate how thoughtful, community-driven design can transform underutilized spaces into places that provide shade, capture water, support learning, and bring people together.



Wilmington Middle School stormwater infrastructure system

Green Infrastructure Highlights

TreePeople’s Green Infrastructure team advanced projects that reflect what’s possible when communities, design, and environmental solutions come together—creating spaces that are not only greener, but more functional, inclusive, and resilient.

Vista High School

At Vista High School, a traditional 9-12th grade high school and a continuation campus serving students working to complete their education, TreePeople partnered with students, staff, and the school district to bring a new green schoolyard vision to life.

Throughout the design and early construction process, students engaged directly with the project—gaining exposure to landscape design, construction, and environmental stewardship. This connection sparked new interest in green careers, with students beginning to see pathways for their future in this work. Through partnerships with contractors like SLA Inc, who are committed to workforce development, the project is extending its impact beyond the campus—linking education, job training, and community investment. Vista High School reflects how green schoolyard projects can do more than transform space—they can open doors for the next generation.

Wilmington Middle School

At Wilmington Middle School STEAM Magnet, TreePeople brought the school community together to begin transforming the campus into a living, learning landscape. The first phase included planting 26 new trees and launching construction on a redesigned schoolyard that will remove nearly 16,000 square feet of asphalt. In its place, the campus will feature a 3,660 square foot stormwater capture system capable of infiltrating nearly 22,000 gallons of water, along with outdoor classrooms, 972 new native plants, and flexible spaces for learning and gathering. This transformation will create a cooler, greener campus that supports both environmental resilience and student well-being—demonstrating how infrastructure can be reimagined to serve multiple benefits.

Carlisle Street Green Alley

In San Fernando, TreePeople is working with residents to reimagine the Carlisle Street alley as a greener, safer, and more functional community space. Through community workshops, residents shared priorities around safety, flooding, and everyday usability—while also expressing excitement about incorporating green infrastructure and public art into the design. Balancing these community insights with site constraints, including underground utilities and circulation needs, the project reached a major design milestone this year. The result is a plan that reflects both the realities of the space and the aspirations of the people who use it.



Vista High School tree planting

Watershed Health

TreePeople's Watershed Health team coordinates stormwater capture and infiltration projects across neighborhoods and regions. By addressing water quality and promoting sustainable water resource practices, the team helps communities and ecosystems thrive while building long-term resilience in drought and climate-impacted areas.



42,511

square feet of lawns transformed to native habitat

Expanding the Legacy of Regional Water Leadership

In 2025, TreePeople expanded its leadership in water resilience—bringing longstanding work into a more unified and impactful approach. TreePeople's leadership in water resilience is anything but new; for decades, TreePeople has shaped Los Angeles County's transition toward more sustainable, community-centered water systems, from infrastructure planning to policy reform to on-the-ground restoration. The establishment of this official department brings our longstanding water programs under a unified structure, reflecting the expanding scale, urgency, and impact of the water work accomplished as climate pressures intensify across the region.



Water Ambassadors

Watershed Health Highlights

TreePeople's Watershed Health team works to create a more resilient water supply, improve water quality, and bring community enhancements across Los Angeles County.

Water Ambassadors

To grow the next generation of water stewards, TreePeople established the Watershed Ambassador Program, a seasonal program designed to amplify messaging and enhance community participation in the Safe, Clean Water Program. Three Water Ambassadors each focused on a specific region: Southeast Los Angeles, Northeast San Fernando Valley, and West San Fernando Valley, leading nine months of on-the-ground outreach and community organizing efforts.

Santa Clara River Watershed Coordinator

A major focus of TreePeople's work within LA County's Safe, Clean Water Program includes serving as the Watershed Coordinator for the Santa Clara River Watershed. In this role, TreePeople helps community members understand the Safe, Clean Water Program while encouraging them to design, develop, and implement projects that improve water quality, create a more resilient local water supply, and provide community benefits, such as green spaces and parks.

Native Garden Kit

The Native Garden Kit started in 2022, a program designed to introduce people to Southern California native plants and provide them with installation designs to easily plant a native garden at home. Working with local nurseries, TreePeople's in-house landscape designers, and our cadre of volunteers, TreePeople sells and distributes kits that include 10, one-gallon plants, a plant by number plan, and educational materials to support the installation and long-term success of these gardens. In 2025 alone, TreePeople sold 470 kits, for a total of 4,700 native plants, which will convert approximately 42,511 square feet of lawn and garden space to native habitat that will support a healthy urban ecosystem for years to come.

Research

TreePeople’s Research team is advancing how nature-based solutions are designed, implemented, and scaled across Southern California. By connecting science, community knowledge, and on-the-ground practice, the team ensures that TreePeople’s work—and the work of our partners—is informed by evidence, grounded in real-world conditions, and positioned to deliver lasting impact.



200+
fire-impacted
residents reached to
conduct soil testing

This work is complemented by applied research initiatives like the GroundTruth study, which is developing customized planting strategies to improve soil structure, increase stormwater capture, and expand urban cooling potential across diverse environments. Together, these efforts are building a more precise and scalable understanding of how nature-based solutions can perform across the region.

Advancing Science into Action

In 2025, TreePeople’s Research team deepened its role as a bridge between science and implementation—translating data into strategies that strengthen communities, restore ecosystems, and inform regional decision-making.

A core focus of this work has been advancing the role of soil as a critical foundation for climate resilience. Through partnerships with UCLA and the LA Urban Soils Social Impact Collaborative, TreePeople helped lead Los Angeles’ first free soil testing events for fire-impacted communities. These efforts provided more than 250 residents with soil screening and one-on-one guidance—equipping communities with the knowledge needed to safely restore their landscapes after wildfire.

At the same time, TreePeople is helping shape the future of urban land management through the concept of Climate Gardening—a multidisciplinary approach that integrates climate science, soil health, and human behavior to guide how landscapes are designed and cared for at both the household and community scale.

Informing Regional Systems

Beyond individual projects, TreePeople’s Research team is influencing how systems operate at a regional scale. Through the LAUSD Living Schoolyards study, the team demonstrated how stormwater capture and treatment infrastructure can be seamlessly integrated into schoolyard design—showing how educational spaces can also serve as critical climate infrastructure.

As an active member of the Gateway Cities Regional Climate Collaborative, TreePeople is working alongside public agencies and community partners to advance strategies that improve water quality, expand green space, and strengthen climate resilience in communities that need it most.

In addition, TreePeople is serving as the community engagement lead for the Los Angeles Regional Report of California’s 5th Climate Assessment—helping translate complex climate data into priorities and actions that reflect the lived experiences of communities across the region.



Climate Gardening Symposium

Looking Ahead

Together, this work positions TreePeople as both a practitioner and a thought partner—helping define how science can more effectively guide action in a changing climate. As environmental challenges intensify, the need for solutions that are both evidence-based and community-informed will only grow. TreePeople’s Research team is helping meet that need—ensuring that the knowledge generated today leads to stronger, more resilient communities tomorrow.

Support TreePeople's Work

Volunteer

Lend Your Hands, Grow Our Impact



6,624
volunteers

656
volunteer events

TreePeople's mission thrives because of the energy, passion, and commitment of our community. Throughout Southern California, volunteers join us to plant and care for trees, remove invasive species, restore wildlands, and beautify parks and trails, all while learning about urban forestry and climate resilience along the way. Our volunteer and training events are open to individuals and small groups, with support, tools, and instruction provided at every event. Whether you're helping to plant a tree that cools an underserved neighborhood or restoring a mountain watershed, every hour you give strengthens TreePeople's impact and builds a greener, healthier region for all.

Be a part of the solution: explore our upcoming events and opportunities at treepeople.org/volunteer



Evergreen Society launch



Plants of Tovaangar planting

Evergreen Society

Deep Roots, Lasting Impact

2025 marked the launch of TreePeople's newest major giving program, our Evergreen Society. In its inaugural year, the Society welcomed a committed group of 65 founding households and private foundations whose support is already shaping the future of our work. These donors provide crucial operating support at the \$10k+ level annually, allowing TreePeople to expand our reach, strengthen our team, and invest in long-term environmental solutions. We celebrated this milestone with our first Evergreen Society gathering in the heart of West Hollywood, where Members shared thoughtful conversation and hopes for a greener future. Guests proudly donned Evergreen Society pins in the shape of a coast live oak leaf—a fitting symbol of generosity that allows us to grow, adapt, and thrive in the face of adversity and shifting challenges. Together, this community is helping to lay the foundation for the next generation of climate leadership.

For more information about Evergreen Society Membership, please visit donate.treepeople.org/evergreensociety



LA River Greenway restoration

The Canopy

Let's Build a Greener, More Equitable Future

In its second year running, our monthly giving program continued to empower TreePeople to deliver consistent, community-centered climate solutions. Throughout 2025, The Canopy experienced a 25% increase in active members, reflecting a growing community committed to lasting environmental stewardship. As TreePeople's official Membership program, The Canopy strengthens our capacity to deliver measurable outcomes in our focus areas. Over the past year, Members provided a 25% growth in monthly giving revenue to help expand shade in underserved neighborhoods, restore wildlands, and support youth environmental education. As the most effective and sustainable way to support TreePeople, monthly giving provides the stability needed for this work to grow and evolve for years to come. As we look to 2026, we hope to grow The Canopy to deepen engagement and strengthen the impact of this vital TreePeople community.

To become a Canopy Member today or to learn more, please visit treepeople.org/canopy

Planned Giving

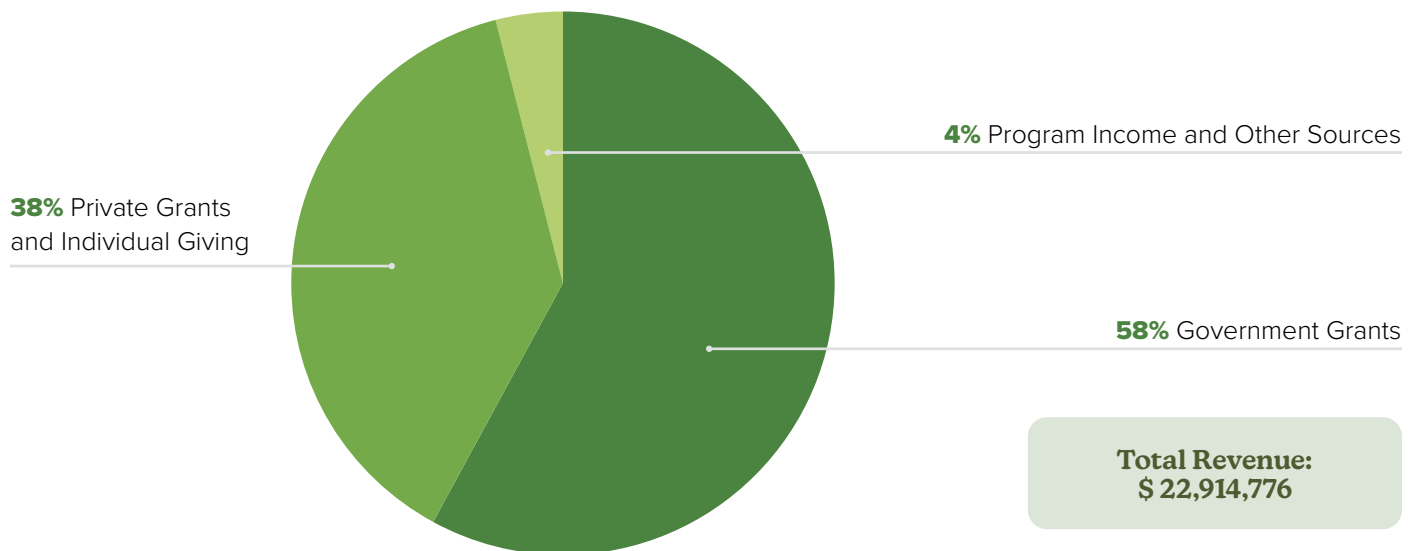
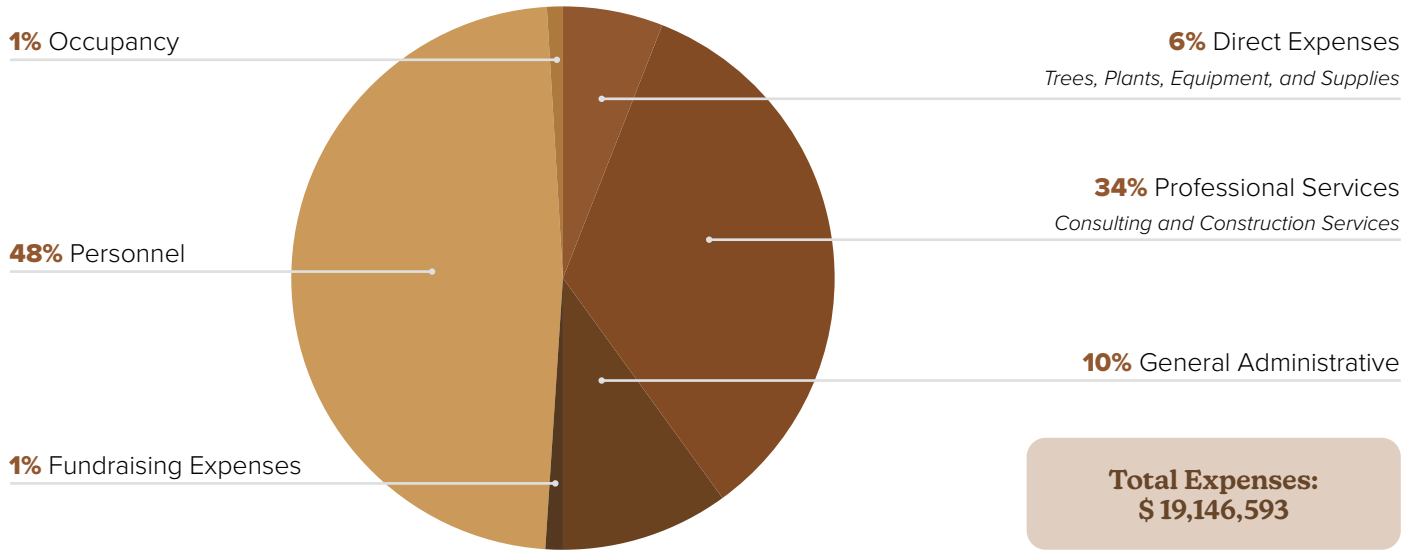
Growing A Legacy with TreePeople

TreePeople also launched our new Planned Giving program, offering donors a simple and flexible way to create a lasting environmental legacy. Through our partnership with FreeWill, supporters can now draft a will, establish a bequest, or designate beneficiaries in under 20 minutes—at no cost! This program accommodates a wide range of assets and estate sizes, ensuring that anyone can make a gift to sustain our work for future generations. We prioritize donor privacy and thoughtful recognition to maximize the impact of any planned gift. TreePeople is honored to help supporters shape their charitable legacy to reflect their values while creating long-term impact for the communities and spaces we serve.

To make your free will today, visit donate.treepeople.org/plannedgiving

2025 Financials

For more than 50 years, TreePeople has stewarded both environmental and organizational resources with discipline, transparency, and care. Today, we continue that legacy through strong financial oversight, transparent governance practices, and a commitment to long-term sustainability. Every investment in our mission is managed with intention to ensure efficiency, accountability, and meaningful return in impact.



TreePeople is proud to hold top ratings from trusted charity evaluators.

For more information about our Financials, please visit treepeople.org/financial-statement



Leadership

TreePeople Board of Directors

John D. Bunzel, *Chair* | Senior VP, Global Sports and Entertainment, 310 Group at Morgan Stanley

Beth Burnam, *Treasurer* | Firewise Regional Coordinator, Mono and Inyo Counties

Edgar Dymally, *Secretary* | Senior Project Manager, HDR Engineering, Inc.

Noah Perch-Ahern, *Vice Chair* | Partner, Environmental Group Greenberg Glusker Fields Claman & Machtinger LLP

Melissa Abbott | General Manager, Olympics Marketing, Delta Air Lines

Laurie Benenson | Documentary Filmmaker

Phil Boesch | Founder, Boesch Law Group

J. Lee Braly | Principal, i2i Consulting

Sergio Bustamante | VP, BCA Customer Support, Boeing

Jonathan Fielding | Founder, UCLA Fielding School of Public Health

Karin Fielding | UCLA Fielding School of Public Health

Jonathan Friedland | Principal, Octagonal Hall LLC

Ruth Goldway | Chair, US Postal Regulatory Commission (Retired)

Nancy Helsley | Conservation District Director

Lee Kats | Dean, Seaver College, Pepperdine University

Jered Lindsay | Director & Managing Attorney, Environmental Section, Southern California Edison

Mindy Mann | Entrepreneur

Sara Nichols | Public Interest Environmental Lawyer (Retired)

Josephine Powe | Environmental Lawyer (Retired)

Sam Whiting | Boeing (Retired)

Ira Ziering | Partner, Ziering France Co.

David Zucker | Film Director, Producer, and Screenwriter

TreePeople Leadership Team

Cassie Rauser | Chief Executive Officer

Brett Stapleton | Chief Financial Officer

Kevin Gaston | Executive Director of TreePeople Land Trust

Autumn Torregano | Senior Director of Human Resources

Marcos Trinidad | Senior Director of Programs

David Pineda | Senior Director of Strategy and Impact

Eileen Garcia | Director of the Project Management Office

Manny Gonez | Director of Policy Initiatives

Alex Miller | Director of Marketing & Communications

Saxon Miller-Jones | Director of Development

Alex Sharrigan | Director of Technology & Site Operations

TreePeople Department Directors

Maria Adame | Director of Environmental Education & Outdoor Equity

Dustin Herrmann | Principal Scientist

Katie Mills | Director of Environmental Education Strategy & Partnerships

Thierry Rivard | Director of Conservation Strategies

Emily Tyrer | Director of Green Infrastructure

Amanda Begley | Associate Director of Watershed Health

Mario Dagonel | Associate Director of Community Engagement

Bryan Vejar | Associate Director of Community Forestry

Alyssa Walker | Associate Director of Conservation





Together, we are growing a more resilient, thriving Southern California. Thank you.

To our Donors, for your belief in our mission and your investment in meaningful, lasting change. Your generosity fuels every milestone we celebrate.

To our Volunteers, for giving your time, energy, and heart to every project site. Your hands-on dedication brings our work to life in powerful ways.

To our Partners, for your collaboration, trust, and shared commitment to creating healthier, more resilient communities. Together, we are turning vision into action across Southern California.

Thank you for believing in the power of trees and the importance of community.

Trees Need People and People Need Trees.



TreePeople

Follow us on Instagram: [@treepeople_org](https://www.instagram.com/treepeople_org)
Volunteer with us: [treepeople.org/volunteer](https://www.treepeople.org/volunteer)
Support our work: [treepeople.org/donate](https://www.treepeople.org/donate)

