



# About Us

## *Trees need people. People need trees.*

Born from the efforts of a teenager over 50 years ago, TreePeople inspires and supports the people of Southern California to come together to plant and care for trees, harvest the rain, and renew depleted landscapes. TreePeople has activated millions of people in planting and caring for millions of trees.

TreePeople unites with communities to grow a greener, shadier, and more water-secure city in homes, neighborhoods, schools, and the local mountains. We work with both educators and students to train the next generation of eco-conscious leaders. We steward thousands of acres of land—maintaining habitats and protecting land from development. We develop original, actionable research that drives science-based policy. We train volunteers on the ground to help build a greener Southern California.

When communities face extreme heat, TreePeople plants and distributes shade trees. When California experiences climate emergencies like fires, droughts, and floods, TreePeople designs and implements sustainable solutions to protect and restore natural resources. When schools are covered in asphalt, TreePeople creates green schoolyards. When students worry about the future, TreePeople provides tools and education to train our next generation of environmental leaders. As the world faces increasing threats from climate change, TreePeople helps unite communities around actionable solutions.



## AT TREEPEOPLE, WE HAVE:



Planted and cared for  
**millions of trees**



Educated **hundreds of thousands of youth**  
on the environment



Helped drive **hundreds of millions of dollars** in  
public funding towards  
climate solutions

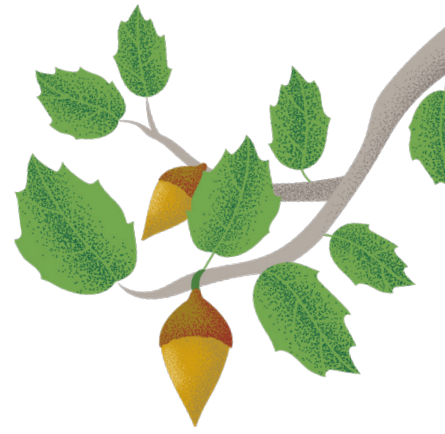


Stewarded and  
protected **over 3,000 acres**  
of wilderness

# Changing the World

*We provide the tools to make a difference.*

TreePeople inspires, engages, and supports people to take action for the environment – making it safe, healthy, fun, sustainable, and resilient. We share our process as a model for the world:



## Ensuring Equity for Everyone

*Building environmental and social justice in vulnerable communities.*

We are dedicated to building climate resilient cities and focus on communities in which Black, Indigenous, Latino, and other people of color have the lowest tree coverage, carry the heaviest burden of pollution, and endure increased illness and death due to extreme heat. TreePeople centers our work around those who suffer the worst environmental impacts as a result of systemic racism and historical disinvestment.

## Educating Our Future

*Providing students, teachers, and the school community with the knowledge, tools, and support they need to create positive environmental change.*

TreePeople engages and supports students, teachers, and the general public with skills to build a greater understanding of the environment. We work alongside them to take action by providing hands-on STEM environmental projects and access to nature.

## Leading through Research & Policy

*Conducting cutting-edge research and facilitating policies that support nature-based solutions.*

TreePeople works from the grassroots to the state and federal levels to facilitate actionable research and science-based policies, incentives, and funding to build a climate-resilient Southern California. In collaboration with partners, we use green (trees), blue (water), and brown (soils) infrastructure in cities and wildlands to create community resilience for all.

## Reforesting Cities & Wildlands

*Restoring ecosystems, planting trees, and incorporating nature-based solutions in our forests, streets, and coastal communities.*

TreePeople's Forestry program includes both Community and Mountain Forestry. The Community Forestry program supports Californians with the inspiration, education, and tools to increase tree canopy where it's most needed—building resilience in the face of climate impacts. The Mountain Forestry program trains and mobilizes thousands each year to increase the climate and fire-resilience of Southern California's wildlands by removing invasive vegetation and planting native plants and trees.

## Conserving Our Parks & Trails

*Protecting and stewarding natural parks and open spaces.*

We acknowledge that the land TreePeople owns, manages, and conserves is on the ancestral lands of the Tongva, Chumash, and Tataviam people—the original stewards of this land. We honor their elders, both past and present, for their continued connection to and protection of one of the most beautiful and diverse landscapes in the world.

These lands are home to miles of recreational trails and acres of biodiversity hotspots and are the source of rich cultural and conservation science. Coldwater Canyon Park, which TreePeople manages and maintains as our headquarters, is one of the most visited parks in Los Angeles. Through the TreePeople Land Trust, we manage more than 3,000 acres in the ecologically diverse Santa Monica Mountains. We offer a multitude of guided park activities, including Moonlight Hikes and Eco-Tours.

## Volunteer with Us

Volunteering with TreePeople is fun and rewarding. Our events equip you with the support, training, and tools you need to be an engine of change. Join us as we plant and care for trees, remove invasive species, and build a sustainable future throughout Southern California. [treepeople.org/get-involved](https://treepeople.org/get-involved)

## Support Our Movement

TreePeople's success depends on generous contributions from our community. Help us plant more, educate more, and inspire more by including TreePeople in your giving plans. Become a sustaining member, make a planned gift, or dedicate a bench or tree to honor your loved ones! [treepeople.org/donate](https://treepeople.org/donate)