

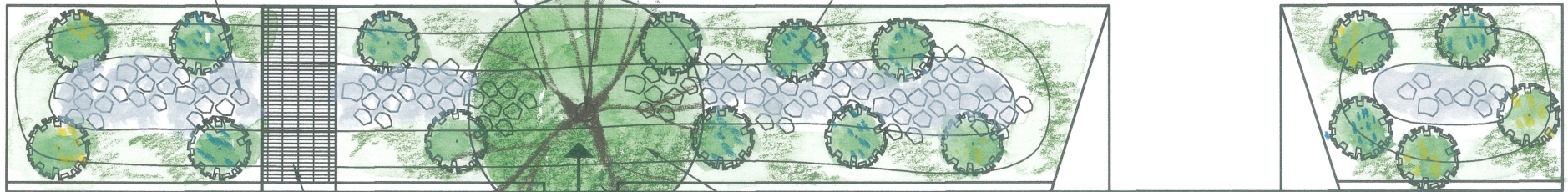
ROCK/PEBBLE
NO PLANTING AT
BASE OF SWALE

DEPRESSION FOR
DETAINING STORMWATER

PLATANUS RACEMOSA-
CALIFORNIA SYCAMORE
CITY APPROVED FOR
6'-8' WIDE PARKWAYS

OPTIONS:

- ACHILLEA MILLEFOLIUM-
YARROW
- SALVIA CHAMAEDRYOIDES-
GERMANDER SAGE
- ACHILLEA 'MOONSHINE'-
MOONSHINE YARROW
- ROSMARINUS OFFICINALIS 'PROSTRATUS'-
TRAILING ROSEMARY



HEUCHERA MAXIMA- CORAL BELLS- IN SHADY ENVIRONMENTS

WALKWAY BRIDGE FROM
STREET TO SIDEWALK

CURB CUT FOR
STORMWATER

PARKWAY WITH SWALE

SCALE" $\frac{1}{8}$ "=1'-0"